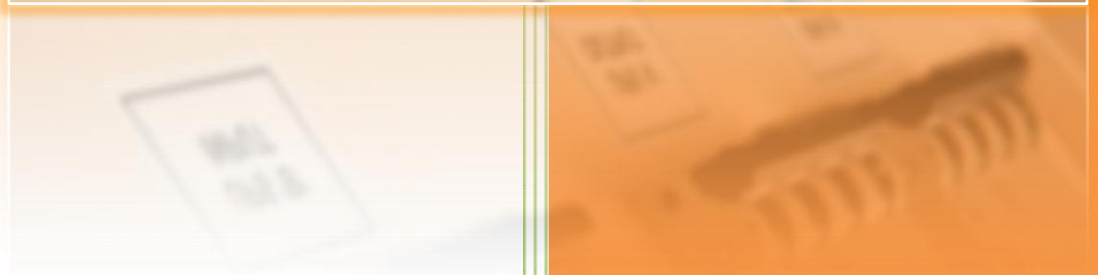


External Manual Maintenance Bypass Systems



The installation of an External Manual Bypass System (EMBS) provides for a manually initiated no break transfer of your load from the UPS output to the mains supply. The transfer procedure is interruption free and provides for isolation of the system for undertaking routine maintenance, servicing, testing or repair.

EMBS's can be arranged 19" rack-mounting, wall or free standing dependent upon system rating and can be supplied for both single and parallel systems.

Key features and range of options include:

- Self-contained unit housing all necessary switchgear and terminations.
- Provides for complete isolation of the system for maintenance, service, testing and repair.
- Electrical or 'Castell' interlocking to prevent inadvertent switching (optional).
- IP ratings options to suit environment.
- Plain or glass door options.
- Can be supplied to customer specified internal separation forms of construction in accordance with BS EN 60439-1.
- Metering and display options.
- Spare ways for future upgrade.
- Bottom, top or side cable entry including provision of dedicated cable ways if required.
- Output distribution options combining both UPS and Non-UPS supported outputs.
- TEMPEST Filters – to prevent interrogation of conducted lines in high security applications such as IT & communications and command and control facilities.
- Provision for connection of external load bank.



The following schematics provide a general overview in regard to the various configuration options available.

Fig A – Single module system. Two breaker configuration.

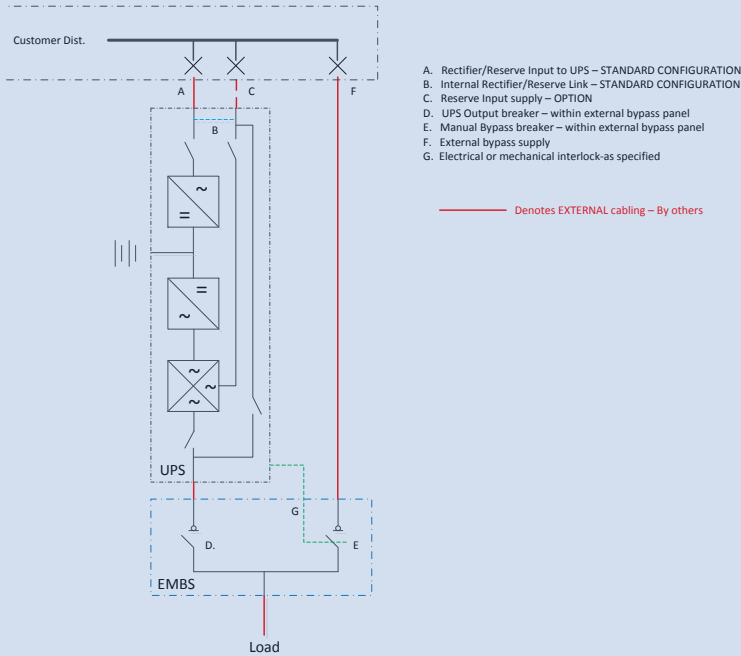


Fig B – Single module system. Three breaker configuration.

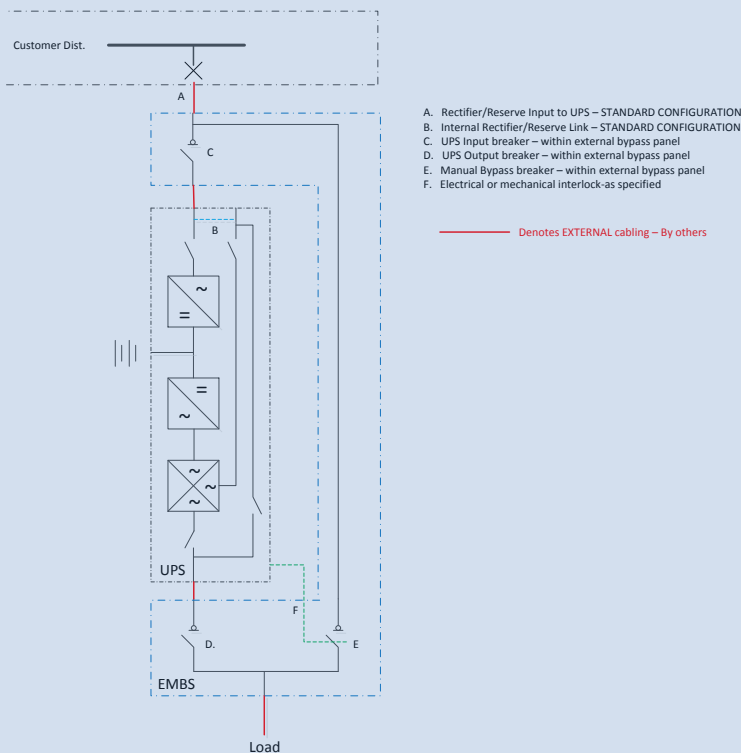


Fig C – Single module system. – Four breaker configuration.

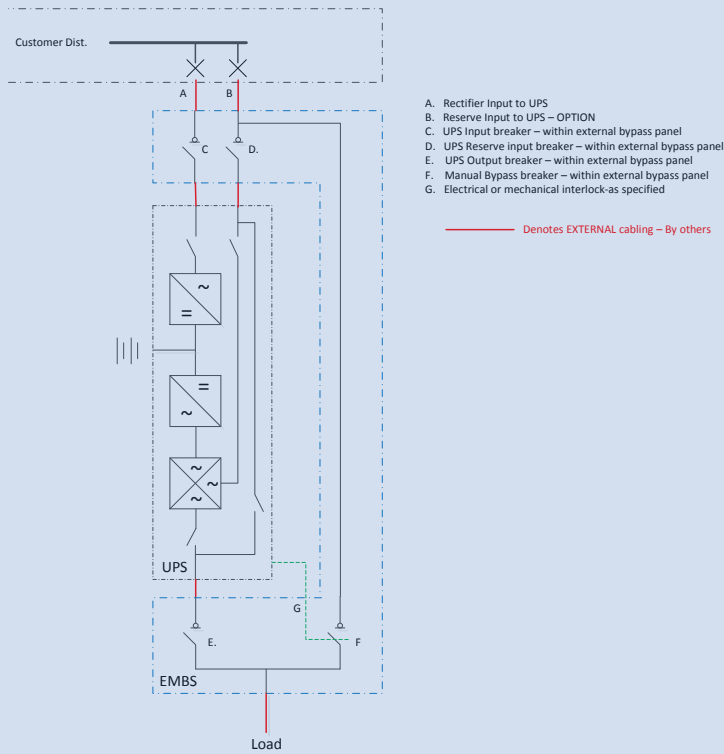
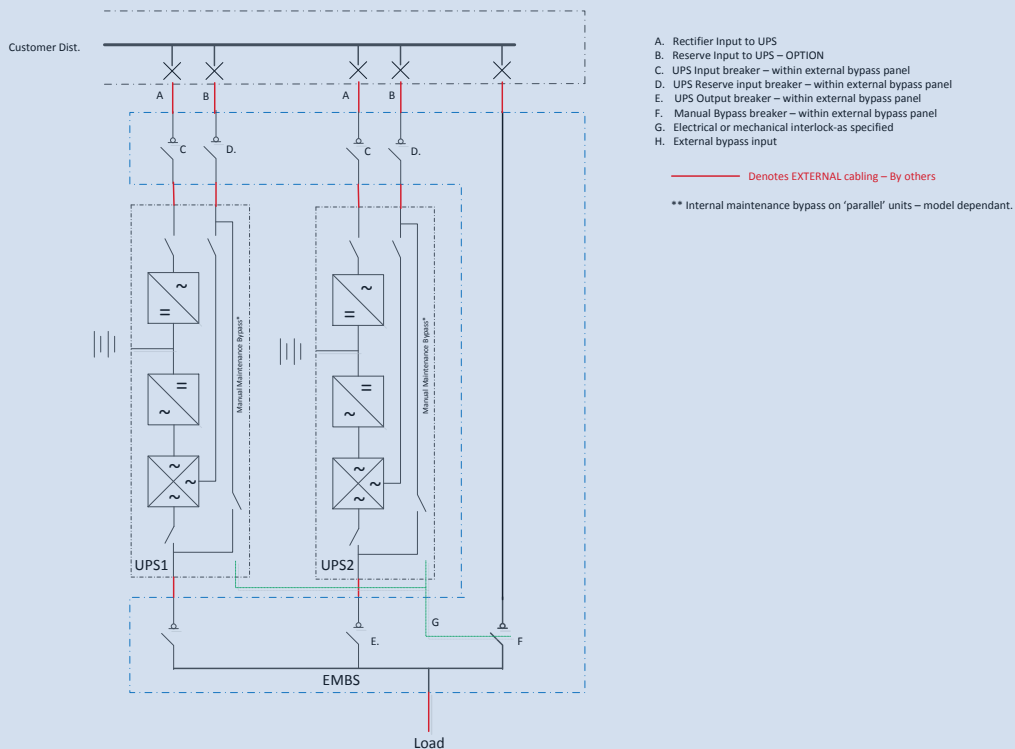


Fig D – Parallel configurations for either ‘Redundancy’ or ‘Capacity’.





SIEL Energy Systems Ltd

SIEL House,
Unit E, Draycott Business Park
Cam, Gloucestershire. GL11 5DQ

www.sielenergy.co.uk
email:enquiries@sielenergy.co.uk

Telephone: 0845 130 6118
Fax: 01453 899215

Ref: EMBS01/06/14R0